

LEEDS PHILHARMONIC
CHORUS

Choral Season

2012 – 13

www.leedsphil.org

Welcome to our 2012-13 choral season programme.

This season Leeds Philharmonic Chorus will perform a total of five concerts in Leeds Town Hall: two concerts as part of the Leeds International Concert Season, two of its own promotions, and the traditional and much-loved Lord Mayor's Carol Concerts in December.

The first of our own promotions is on Sunday 14 October, an evening of twentieth century choral and orchestral music by Britten, Holst and Dyson, when we are delighted to welcome choristers from The Grammar School at Leeds and Harrogate Grammar School to join us. The second, on 15 December, is the ever-popular *Messiah*, but with a difference: this year the Chorus will be accompanied by the multi-award-winning Black Dyke Band, one of the oldest and best-known brass bands in the world.

Thank you for your past support. We look forward to welcoming you again this season.

In association with



About us

Director of Music: **David Hill**

Established in 1870, the Leeds Philharmonic Chorus – affectionately known as The Phil – has been a continuous and integral part of the local music scene, performing with world-class orchestras, conductors and soloists for the people of Leeds and beyond.

Its repertoire covers everything from traditional and well-known large-scale choral works to modern and lesser-known works, including specially-commissioned new compositions. One such highlight was the 2007 world première, in Leeds Town Hall, of *The Brontë Mass* by distinguished Yorkshire-born composer Philip Wilby.

In addition to its Town Hall appearances, the Phil regularly performs in other major UK concert venues such as the Symphony Hall, Birmingham, the Bridgewater Hall, Manchester and the Sage Centre at Gateshead, while its biennial overseas tours have taken it to important musical cities throughout northern Europe, including Prague, Budapest and Vienna. Its distinguished past musical directors have included Sir Charles Stanford, Sir Edward Bairstow,

Sir Malcolm Sargent, Sir Charles Mackerras, Sir Charles Groves and Richard Hickox. The Chorus was delighted when David Hill became its Music Director in May 2005, thus continuing the tradition of leadership by the most eminent British choral conductors of the day.

The Chorus has recorded CDs of Stanford's *Stabat Mater* and *Te Deum* (Chandos), Walton's *Gloria* and *Belshazzar's Feast* (Naxos) and Handel's *Messiah* (CMI Records). Many of its concerts have been broadcast on BBC Radio 3 in conjunction with the BBC Philharmonic Orchestra.

The Phil's President is Dr Ingrid Roscoe, Lord Lieutenant of West Yorkshire.



“One of the finest performances we are ever likely to hear.”

Yorkshire Post

“This performance contained power and introspection... a meaningful performance, full of integrity.”

The Guardian

Sunday 14 October 2012, 7pm

LEEDS TOWN HALL

Leeds Philharmonic Chorus

The National Festival Orchestra

Choristers of The Grammar School at Leeds
and Harrogate Grammar School

An Evening of Twentieth Century English Music



DARIUS BATTIWALLA



CLARE BULLIMORE



KIERON MOORE



PAUL DUTTON

Darius Battiwalla
conductor

Graham Eccles
organ

Alan Horsey & Clare Bullimore
piano duet

Sarah Potter
soprano

Paul Dutton
tenor

The Boy Nicolas:

Kieron Moore treble (Leeds Minster Choir)

The Three Pickled Boys:

**Joseph McDermott, Hamish Broadbent,
Benedict Baily** trebles (York Minster Choir)

Britten St Nicolas

Dyson Hierusalem

Holst Two Psalms

Britten Simple Symphony

Tickets: £16 – £31.50

Concessions available

Thursday 13 December 2012, 6.30pm & 8.30pm

LEEDS TOWN HALL

Leeds Philharmonic Chorus

Rothwell Temperance Brass Band

Lord Mayor's Carol Concerts

Introduced and conducted by
Simon Lindley

Alan Horsey
organ

Celebrate Christmas at Leeds Town Hall's annual family carol concerts. After the concert there will be a collection for the Lord Mayor's Charity Appeal.

This year the Lord Mayor is supporting the work of Crohn's and Colitis UK in its efforts to raise £15,000 for the purchase of two capsule endoscopy systems – one at the Leeds General Infirmary and one at St James's Hospital. This will provide tangible benefits for people in the area who have Inflammatory Bowel Disease (IBD) and will be accessible for both adult and child patients.



SIMON LINDLEY



ALAN HORSEY



ROTHWELL TEMPERANCE BRASS BAND

Tickets: £5

Concessions £2.50

Saturday 15 December 2012, 7.30pm

LEEDS TOWN HALL

Leeds Philharmonic Chorus

The Black Dyke Band

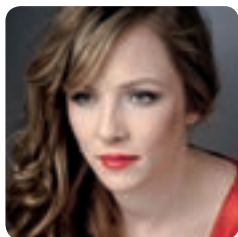


DAVID HILL

© JOHN WOOD



DAVID HOULDER



KERI FUGE

© LUKASZ RAJCHERT



ALEXANDER ASHWORTH



THE BLACK DYKE BAND

Handel's Messiah

David Hill
conductor

David Houlder
organ

Keri Fuge
soprano

Katie Bray
alto

Peter Davoren
tenor

Alexander Ashworth
bass

Handel Messiah

Tickets: £16 – £31.50
Concessions available

Saturday 9 March 2013, 7.30pm

LEEDS TOWN HALL

Leeds Philharmonic Chorus

BBC Philharmonic

Presented by

LEEDS INTERNATIONAL
CONCERT SEASON

Haydn's The Creation

David Hill
conductor

Sarah Fox
soprano

Nicholas Mulroy
tenor

Neal Davies
bass

Haydn The Creation



DAVID HILL

© JOHN WOOD



SARAH FOX



NICHOLAS MULROY



NEAL DAVIES

© SUSSIE AHLBURG

Free pre-concert talk by Clive McClelland at 6.45pm

Tickets: £16 – £31.50

Concessions available

Saturday 25 May 2013, 7.30pm

LEEDS TOWN HALL

Leeds Philharmonic Chorus

The Hallé

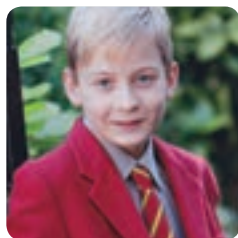
Leeds Festival Chorus

Presented by



DAVID HILL

© JOHN WOOD



JOSEPH McDERMOTT

Music from the New World

David Hill
conductor

Joseph McDermott
treble

Copland Fanfare for the Common Man

Bernstein Chichester Psalms

Bernstein Symphonic Dances:
West Side Story

Adams Harmonium

Free pre-concert talk by Catherine Tackley at 6.45pm

Tickets: £16 – £31.50

Concessions available

By Telephone

0113 224 3801

The Booking Line is open from 10am to 6pm, Monday to Saturday.

Online

www.leedsconcertseason.com

In Person

City Centre Box Office

The Carriageworks, The Electric Press,
3 Millennium Square, Leeds LS2 3AD
E-mail: boxoffice@leeds.gov.uk

The Box Office is open to personal callers from 10am to 6pm, Monday to Saturday.

From Members of the Chorus

Tickets can be bought through individual members of the chorus for our two own-promotion concerts only, on 14 October (Britten/Holst/Dyson) and 15 December (Messiah).

Concessions

Over 60s:

£1.50 reduction on all tickets.

Under 18s, unwaged, full-time students:

50% reduction on all tickets.

Group Bookings

Discounts are available for groups of ten or more. Please contact the Box Office for details.

£5 Standby Tickets for Under 26s

If you're under 26 you can buy tickets in rows 1 – 7 for £5 in the seven days before a concert (subject to availability).



Patrons with disabilities and their essential carers may obtain two tickets for the price of one. There is full wheelchair access to Leeds Town Hall and wheelchair-accessible toilet facilities on all floors. A number of spaces in the seating area are reserved for wheelchair use. Please let the Box Office know when booking of any special access requirement.



Leeds Town Hall is equipped with a closed loop system for the hard of hearing.



A number of free parking spaces are reserved at the front of the Town Hall for blue badge-holders.

Support dogs are welcome.

Leeds Philharmonic Society, like many other cultural organisations, has at its heart a loyal band of Friends who act as a conduit for encouraging support, for keeping interested people informed about the Chorus and who help to raise much needed funds. The Friends help the Chorus to promote its performances and to bring new audiences to support its objective of promoting choral music to the public.

The Friends' membership consists of many loyal spouses, partners, friends and former members who regularly come to the Phil's performances, and who welcome the chance to lend their support. In return they are kept informed of our activities by means of letters from the Friends' Secretary and Chorus Newsletters. Joining the Friends of the Phil is a way of expressing a belief in the value of maintaining high standards of live choral music in Leeds.

For further information about joining the Friends of the Phil please visit www.leedsphil.org.

As a registered charity, Leeds Philharmonic Chorus does not receive government funding or any other endowments other than members' subscriptions (which generally only cover music hire and the fees of its professional music team). The cost of performing great music continues to rise, and therefore, particularly in the case of its own-promotion concerts where it must meet all the costs of publicity, venue/orchestra hire and soloists, the Chorus relies on outside funding to help it continue to perform on a regular basis with the highest quality orchestras, conductors and soloists.

The Chorus is therefore very grateful for the generosity of its commercial and other sponsors, as well as to the people who leave it a legacy. Your association with the Phil may be as a singer past or present, or as an audience member who has enjoyed our concerts. Becoming a sponsor or leaving a legacy is a chance to show how much you have valued this association and what the Chorus has given to you, perhaps over many years.

For over 140 years Leeds Philharmonic Chorus has been at the heart of choral music in Leeds. Your support, either as a sponsor or benefactor through legacy, will help to sustain the future of the Chorus for forthcoming generations of singers and concert-goers.

If you are interested in becoming a sponsor or in leaving a legacy, please email leedsphilchoir@hotmail.co.uk

LEEDS PHILHARMONIC
CHORUS

Come and join us



Do you love singing?

Would you like a chance to

- Sing with professional conductors and orchestras?
- Perform as part of the Leeds International Concert Season?
- Receive musical development and training?
- Perform large-scale choral works from a varied repertoire?
- Sing on European tours?

If you are interesting in joining the Chorus, come and meet us at one of our rehearsals, held every Thursday evening at 7.15pm starting this season on 30 August.

ST GEORGE'S CHURCH

Great George Street, Leeds LS1 3BR
(adjacent to Leeds General Infirmary)

For more information visit
www.leedsphil.org/join.asp

LEEDS PHILHARMONIC
CHORUS

www.leedsphil.org

